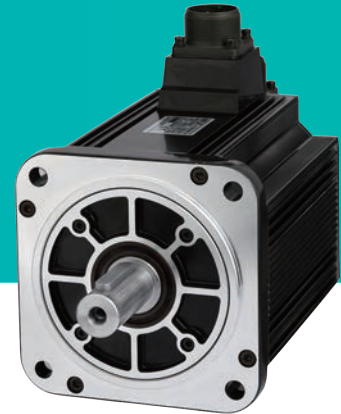


SERVO MOTOR



Specification Description

EMG - 10 A F D 2 4

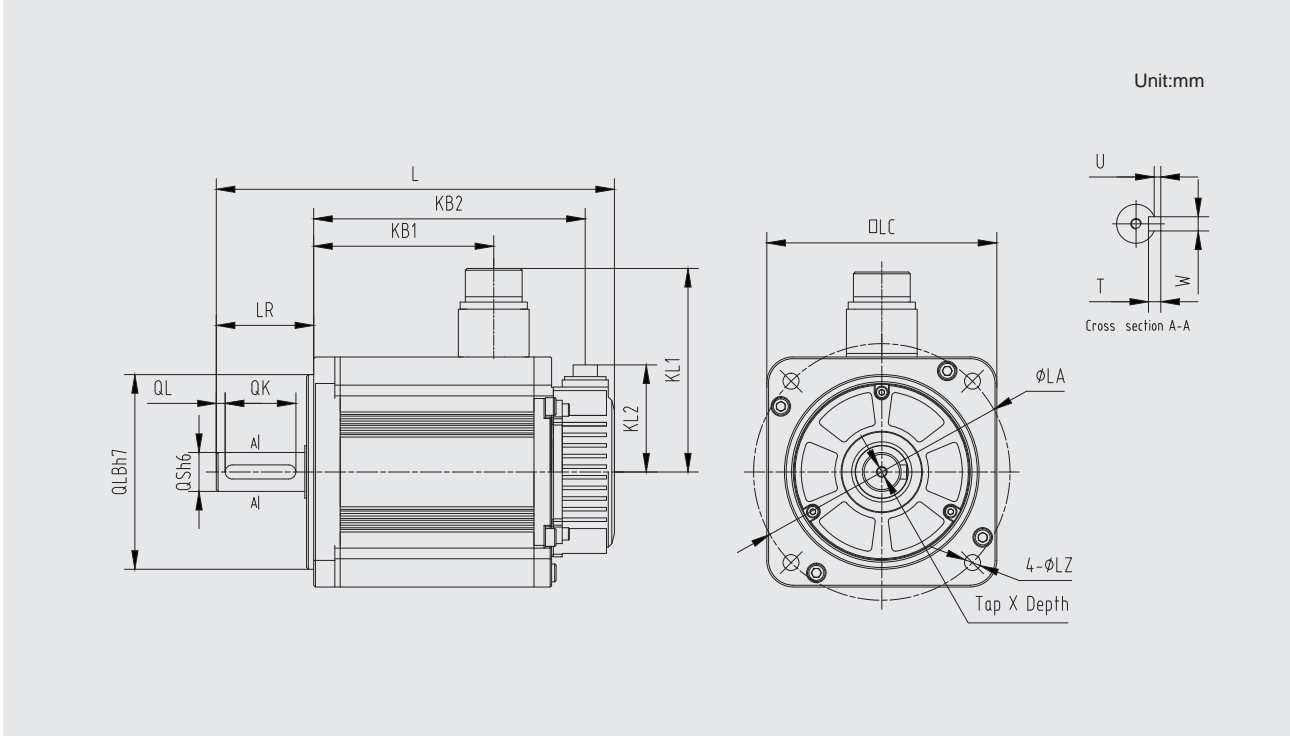
| Servo Motor Model | Rated Output Power | Voltage | Encoder | Design Sequence | Shaft End | Option Parts |
|-------------------------|---|------------------------|---|----------------------------|------------|--|
| Sign Spec. | Sign Spec. | Sign Spec. | Sign Spec. | Sign Spec. | Sign Spec. | Sign Spec. |
| G:EMG Model Servo Motor | 10: 1.0kW 15: 1.5kW 20: 2.0kW 30: 3.0kW 50: 5.0kW | A: 200VAC D: 400VAC | F: 20-bit Incremental Encoder L: 23-bit Absolute Encoder | A,B, Design D: Sequence | 2:with key | 1:None 2:With Oil Seal 3:With Brake (DC24V) 4:With Oil Seal, With Brake (DC24V) |

EMG Servo Motor Rated Value and Specification

| Voltage | | 200VAC / 400VAC | | | | | | | | | | | |
|---------------------------|-------------------------------------|--|--------------------|--------------------|--------------------|--------------------|--------------------|--------------------|--------------------|--------------------|--------------------|--|--|
| Servo Motor model | EMG- | 10AFD□□ 10ALB□□ | 10DFB□□ 10DLB□□ | 15AFD□□ 15ALB□□ | 15DFB□□ 15DLB□□ | 20AFD□□ 20ALB□□ | 20DFB□□ 20DLB□□ | 30AFD□□ 30ALA□□ | 30DFA□□ 30DLA□□ | 50AFD□□ 50ALA□□ | 50DFA□□ 50DLA□□ | | |
| Rated Output Power | kW | 1.0 | 1.0 | 1.5 | 1.5 | 2.0 | 2.0 | 3.0 | 3.0 | 5.0 | 5.0 | | |
| Rated Torque | N·m | 4.78 | 4.78 | 7.16 | 7.16 | 9.55 | 9.55 | 14.3 | 14.3 | 23.9 | 23.9 | | |
| Instantaneous Peak Torque | N·m | 14.3 | 14.3 | 21.5 | 21.5 | 28.7 | 28.7 | 36.5 | 43.0 | 54.3 | 71.6 | | |
| Rated Current | Arms | 5.8 | 3.0 | 8.2 | 4.3 | 11.3 | 5.7 | 18.0 | 8.8 | 28.0 | 15.0 | | |
| Instantaneous Max current | Arms | 17.4 | 9.0 | 24.6 | 12.9 | 33.9 | 17.1 | 54.0 | 26.4 | 84.0 | 45.0 | | |
| Rated Speed | r/min | 2000 | | | | | | | | | | | |
| Max. Speed | r/min | 3000 | | | | | | | | | | | |
| Rotor Moment of Inertia | ×10 ⁻⁴ kg·m ² | 13.2 (14.3) | | 18.4 (19.5) | | 23.5 (24.6) | | 41.3 (44.5) | | 65.7 (68.9) | | | |
| Weight | kg | 7 (8.5) | | 8.9 (10.4) | | 10.8 (12.3) | | 16.63 (20.23) | | 24.3 (27.9) | | | |
| Brake Rated Voltage | | DC24V±10% | | | | | | | | | | | |
| Brake Rated Power | W | 19.5 | | | | | | 35 | | | | | |
| Brake Rated Torque | N·m | 12 | | | | | | 40 | | | | | |
| Encoder | | 20-bit Incremental Encoder; 23-bit Absolute Encoder | | | | | | | | | | | |
| Insulation Class | | F | | | | | | | | | | | |
| Ambient Temperature | | 0 ~ +40°C(No freezing) | | | | | | | | | | | |
| Ambient Humidity | | 20%~80% RH(Non-condensing) | | | | | | | | | | | |
| Vibration | | 24.5m/s ² | | | | | | | | | | | |
| Enclosure | | Totally Enclosed,Self-cooled, IP65 (Except for shaft opening, when not equipped with oil seal) | | | | | | | | | | | |

Note:The values in parentheses are for servo motors with holding brakes.

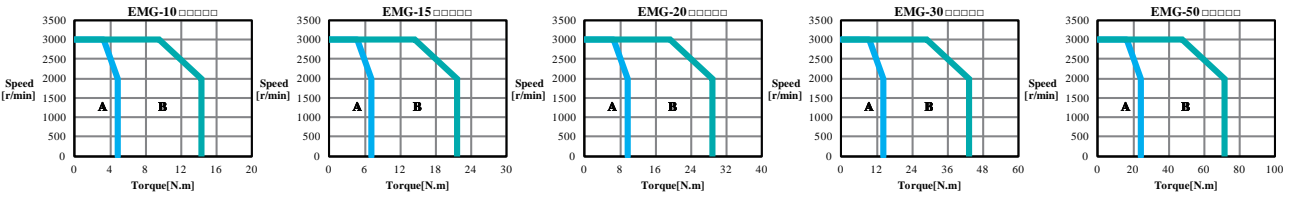
EMG Dimension



| EMG- | L | LL | KB1 | KB2 | KL1 | KL2 | Flange Side | | | | | | S | Tapx Depth | Key | | | | | |
|---------|----------------|----------------|----------------|----------------|-----|------|-------------|-----|----|-----|-----|-------|------|------------|-------|----|----|----|---|---|
| | | | | | | | LR | LE | LF | LC | LA | LB | | | LZ | QK | QL | W | T | U |
| 10□□B/D | 203 (245.5) | 148 (190.5) | 80 (103.2) | 131.5 (174) | 117 | 60.5 | 55 | 4 | 12 | 130 | 145 | 110 | 9 | 22 | M6x20 | 40 | 5 | 8 | 7 | 4 |
| 15□□B/D | 225 (267.5) | 170 (212.5) | 102 (125.2) | 153.5 (196) | | | | | | | | | | | | | | | | |
| 20□□B/D | 247 (289.5) | 192 (234.5) | 124 (147.2) | 175.5 (218) | | | | | | | | | | | | | | | | |
| 30□□A/D | 307 (378) | 228 (299) | 143 | 203 (274) | 140 | 79 | 79 | 3.2 | 18 | 180 | 200 | 114.3 | 13.5 | 35 | M8x16 | 55 | 6 | 10 | 8 | 5 |
| 50□□A/D | 357 (428) | 278 (349) | 183 | 253 (324) | | | | | | | | | | | | | | | | |

Note: The values in parentheses are for servo motors with holding brakes.

EMG Torque-Speed Feature



A: Continuous Working Area B: Repeatedly Working Area